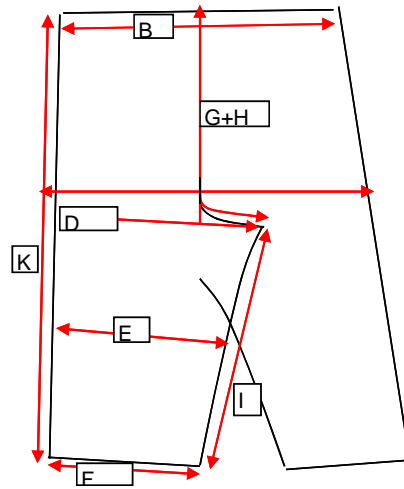


Measurement sketch:



Size:	37	38	39	40	41	42	43	44	45
A Bib top width									
B ½ Waist	61/122.	61/122.	61/122.	61/122.	61/122.	63/126.	63/126.	66/132.	66/132.
C ½ Seat 6 cm above crutch	66/132.	66/132.	66/132.	66/132.	66/132.	74/148.	74/148.	78/156.	78/156.
D ½ Thigh	39,0	39,0	39,0	39,0	39,0	40,0	40,0	44,0	44,0
E ½ Knee 26 cm from the bottom	26,0	26,0	26,0	26,0	26,0	26,00	26,00	28,00	28,0
F ½ Leg opening	21,0	21,0	21,0	21,0	21,0	21,0	21,0	23,0	23,0
G Frontrise	59,0	59,0	59,0	59,0	59,0	60,0	60,0	61,0	61,0
H Backrise									
I Inseam	56/85.	56/85.	56/85.	56/85.	56/85.	59/88.	59/88.	63/92.	63/92.
K Side seam	102/129.	102/129.	102/129.	102/129	102/129.	106/135	106/135.	109/140	109/140
L Boots before welding	32,0	32,0	32,0	32,5	32,5	33,0	33,0	34,0	35,0
M Boots after welding	30,0	30,0	30,0	30,0	30,0	31,0	31,0	32,0	33,0
N Boots around leg	38	38,5	39,0	40,0	41,0	42,0	43,0	43,5	44,0
O									
P									
Size:	46	47	48						
A									
B ½ Waist	66/132.	66/132.	66/132.						
C ½ Seat 6 cm above crutch	78/156.	78/156.	78/156.						
D ½ Thigh	44,0	44,0	44,0						
E ½ Knee 26 cm from the bottom	28,0	28,0	28,0						
F ½ Leg opening	23,0	23,0	23,0						
G	61,0	61,0	61,0						
H Backrise									
I Inseam	63/92.	63/92.	63/92.						
K Side seam	109/140.	109/140.	109/140						
L Boots before welding	35,0	35,5	35,5						
M Boots after we	33,0	33,0	33,0						
N Boots around leg	45,5	46,0	46,5						
O									
P									